

NOTES (UNLESS OTHERWISE SPECIFIED)

1. LINEAR SPECIFICATIONS:

- ENC. RESOLUTION(+A/-A;+B/-B): 5,1 um
- ENCODER REPEATABILITY: 10, 2 um
- INDEX LOCATION(+Z/-Z): 1.5 - 3.5 mm R.H.S

2. MAGNET POLE PITCH: 18.3 mm

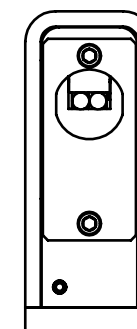
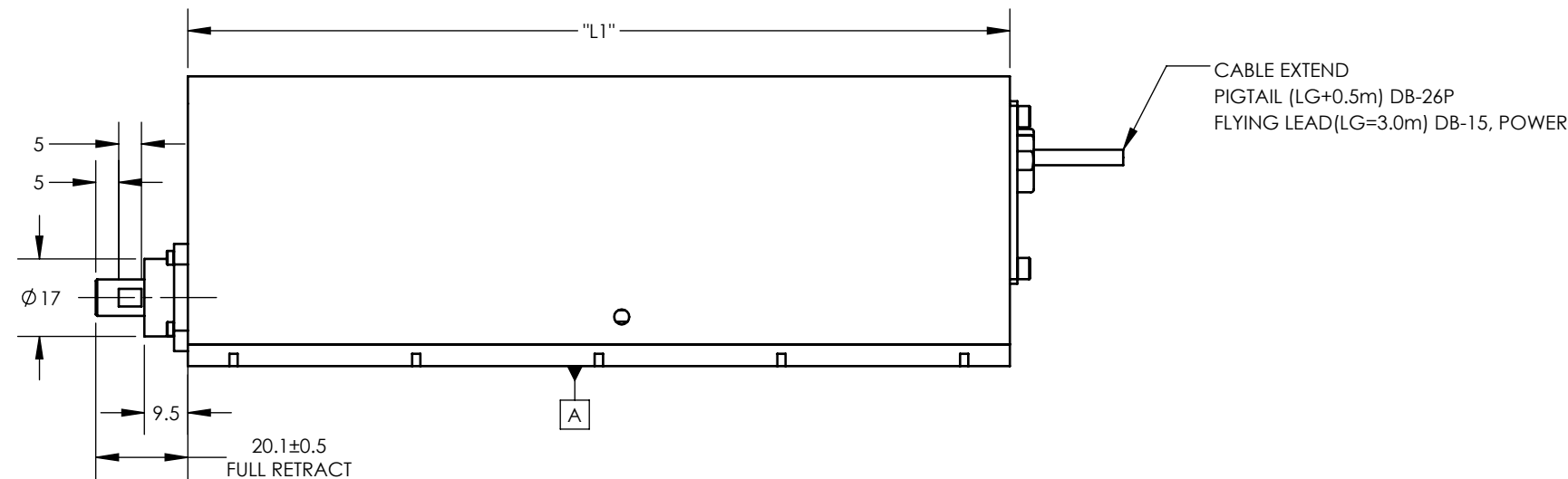
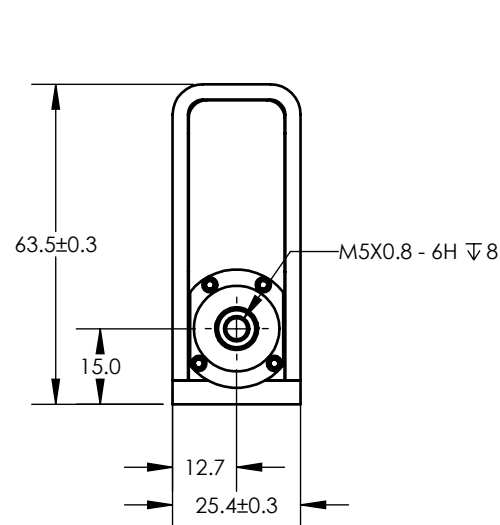
3. OPERATING TEMPERATURE: 0°C TO 40°C

4. PLATING: CERAKOTE, COLOR BLACK

5. TOLERANCES

- X.: ±0.5
- X.X: ±0.25

REV	ECR	DESCRIPTION	DATE	APPROVED
A3	-	UPDATED THE COIL SPECS	4/29/2021	TV
B	-	UPDATED SHAFT DIAMETER	5/11/2021	HE
C	-	UPDATED CABLE PINOUT	5/24/2021	VH
D	-	UPDATED DATA SHEET, ADDED 75MM STROKE	6/21/2021	HE
E	-	UPDATED DATA SHEET & PINOUT	11/18/2021	HE
F	-	UPDATED PINOUT, MOUNTING HOLES WAS M3	2/24/2022	HE
G	-	UPDATED SHAFT RETRACT DIM	3/1/2022	HE
H	7993	ADDED NOSE BUSHING	8/25/2022	TW
J	8025	PIGTAIL CABLE WAS HDB CONNECTOR	10/4/2022	TW



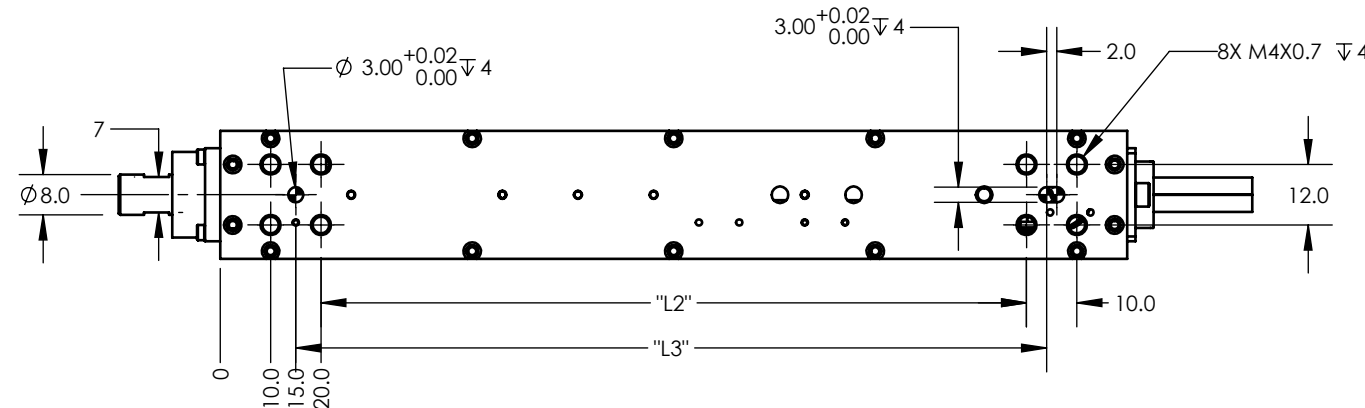
PINOUT PIG TAIL

HDB-26P	
PIN No	DETAIL
1	PH. A+
2	PH. B+
3	PH. Z+
4	NC
5	NC
6	NC
7	NC
8	NC
9	NC
10	PH. A-
11	PH. B-
12	PH. Z-
13	NC
14	NC
15	NC
16	NC
19	+5VDC
17	NC
18	NC
20	5V RTN
21	NC
22	MOTOR (U)
23	MOTOR (V)
24	MOTOR (W)
25	NC
26	NC

PINOUT FLYING LEAD

DB-15P	
PIN No	DETAIL
1	PH. A+
2	PH. Z+
3	PH. B+
4	+5 Vdc
5	NC
6	NC
7	NC
8	NC
9	PH. A -
10	PH. Z -
11	PH. B -
12	5V RTN
13	NC
14	NC
15	NC

PHOENIX. 6P	
PIN No	DETAIL
1	GND
2	+V
3	MOTOR (U)
4	MOTOR (V)
5	MOTOR (W)
6	NC



STANDARD							
No	DETAILS	UNIT	LDL25-010-3X-6	LDL25-025-3X-6	LDL25-050-3X-6	LDL25-075-3X-6	LDL25-100-3X-6
1	Linear stroke	mm	10	25	50	75	100
2	Peak force	N	30	30	30	30	30
3	Force constant	N/A	8.4	8.4	8.4	8.4	8.4
4	Peak current	A	3.6	3.6	3.6	3.6	3.6
5	Terminal resistance	Ohm	12.1	12.1	12.1	12.1	12.1
6	Coil inductance	mH	1.1	1.1	1.1	1.1	1.1
7	Moving mass	Kg	0.1	0.1	0.11	0.12	0.13
8	Total mass	Kg	0.9	0.9	1.1	1.3	1.6
9	Vacuum option		YES(**)	YES(**)	YES(**)	YES(**)	YES(**)
10	Spring return opt		YES	YES	YES	YES	YES
11	Dimension L1	mm	155	155	180	220	260
12	Dimension L2	mm	115	115	140	180	220
13	Dimension L3	mm	124	124	149	189	229

VACCUM **: CONSULT FACTORY

REF. NUMBER	LDL25
CONTRACT	STD

UNLESS OTHERWISE SPECIFIED
 ALL DIMENSIONS ARE IN MM
 BREAK EDGES AND REMOVE BURRS
 TOLERANCES
 X: ±0.5
 X.X: ±0.25
 ANGLE: ±0.1°
 CONCENTRICITY: ±0.025
 ROUNDNESS: ±0.025
 EDGE BREAKS: 0.2 MAX
 ALL DIMENSIONS AND TOLERANCES ARE FINAL

MATERIAL: SEE BOM
 FINISH: SEE BOM
 MACHINE FINISH: 1.6
 INTERPRET PER: ASME Y14.5-2009
 THIRD ANGLE PROJECTION

NAME	DATE
HE	8/17/2021
CHK BY	8/17/2021
ENG APP	TV
MFG APP	
QA APP	

SMAC 5807 VAN ALLEN WAY
 CARLSBAD CA, 92008
 (760) 929-7588

MOVING COIL ACTUATORS

TITLE: **LINEAR ACTUATOR**

SIZE: B PART NO: **LDL25-050-XX-6-F** REV: **J**

SCALE: 2:3 **DO NOT SCALE** SHEET: 1 / 1